

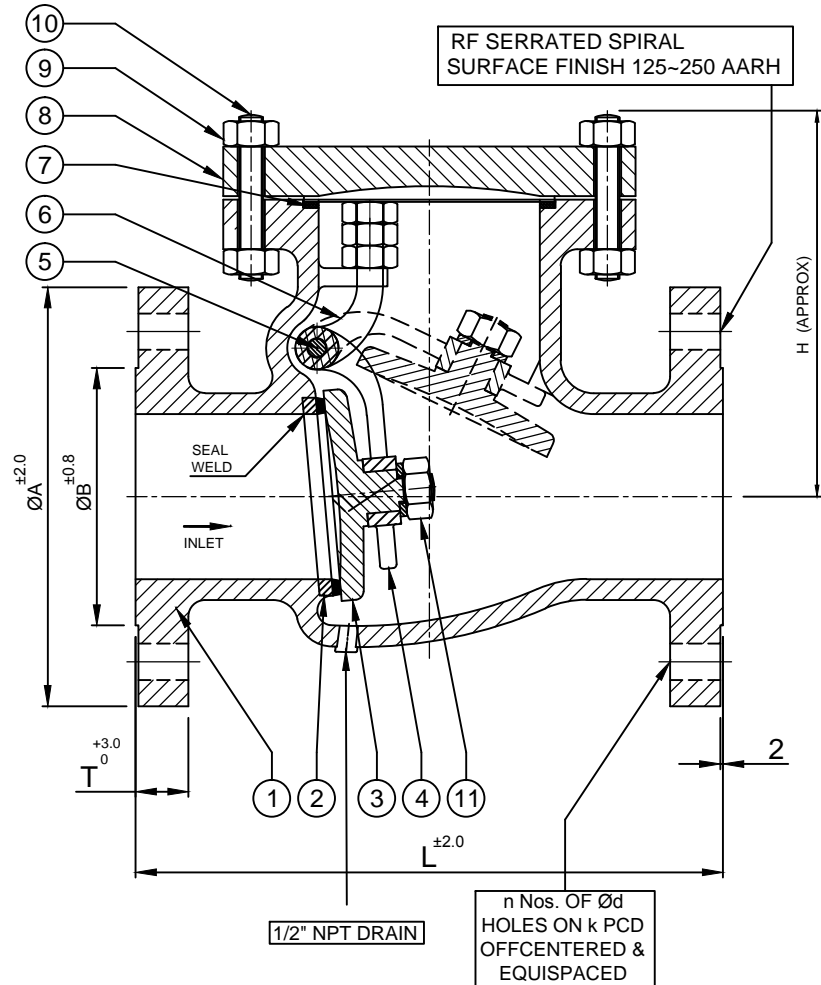
SIZE	L	ØA	ØB	T	H	ØK	Ød X N	QTY.
NB-80 (3")	241	190	127	17.5	195	152.4	19.05 X 4	01
NB-150 (6")	356	280	216	23.9	305	241.3	22.3 X 8	02

STANDARD

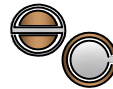
DESIGN :- BS 1868
FACE TO FACE :- ASME B 16.10
FLG. DIM. & DRILLING :- ASME B 16.5
TESTING :- BSEN 12266 P-1

TEST PRESSURE (GAUGE)

DESCRIPTION	HYDRAULIC Kg/CM ²
BODY	32
SEAT	23



NO.	DESCRIPTION	QTY.	MATERIALS
11	DISC NUT	01	S.S.304
10	BODY - COVER STUD	AS REQ.	ASTM A193 Gr.B7
09	BODY - COVER NUT	AS REQ.	ASTM A194 Gr.2H
08	COVER (BOLTED)	01	ASTM A 216 Gr. WCB
07	GASKET	01	SPIRAL WOUND S.S. 304 + PTFE
06	HINGE BRACKET	01	ASTM A 351 Gr. CF8
05	HINGE PIN	01	ASTM A 276 T 304
04	HINGE	01	ASTM A 351 Gr. CF8
03	DISC	01	ASTM A 351 Gr. CF8
02	SEAT RING (SEAL WELD)	01	ASTM A 351 Gr. CF8
01	BODY (FLANGE)	01	ASTM A 216 Gr. WCB

P.O. NO.	P.O. DATE	DRAWN BY	CHD. BY	APPD. BY	DATE	SCALE
		TOFIK			19/05/12	NTS.
CLIENT NAME :		 Engineers Combine I-18, Sayona Industrial Estate, Near Memco Char Rasta, Naroda Road, Ahmedabad-380025.				
TITLE:						
Assembly Drg. of 80mm & 150mm Swing Check Valve (150#)						
E: SWING CHECK VALVE 40MM & 50MM SWING CHECK VALVE (150#)						
DRG. NO.		DIM-SCV-80-150-01		SHEET : 01 OF 01		

UN SPECIFIED TOLERANCES	Symbol	Ra Value	Specification
0.5 TO 75	▽	8 to 25 µm	MEDIUM
76 TO 150	▽▽	1.6 to 8 µm	FINE MACHINED
151 TO ABOVE	▽▽▽	0.025 to 1.6 µm	FINE GROUND
	▽▽▽▽	< 0.025 µm	LAPPED